



# LED DockLight

PATENT # USD0587833



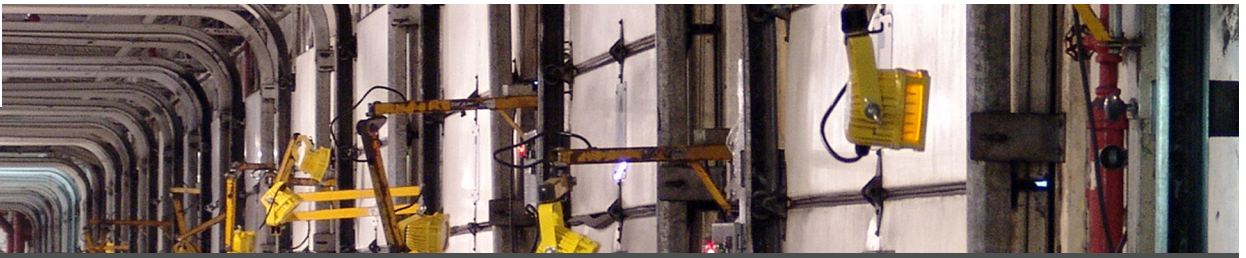
National Shipping Distribution Center



Illuminated 53' Trailer

- Sustainable lighting with powerful output
- Industrial luminaire with 15 watt power consumption
- Rated life of 50,000 hrs to 70% lumen maintenance
- Highly impact resistant; LED technology means no glass lamps to break or replace
- Several cord configurations; 100-244, 277 VAC
- Attaches directly to standard dock light arms for easy retrofit
- Purchase the compatible arm in 24", 42" or 60" lengths
- LTL tested in accordance with LM-79 standards for electrical and photometric measurements of LED fixtures
- Cree™ LEDs tested in accordance with LM-80 standards for measuring lumen maintenance of SSL sources
- UL listed for wet locations
- Standard 5 year warranty



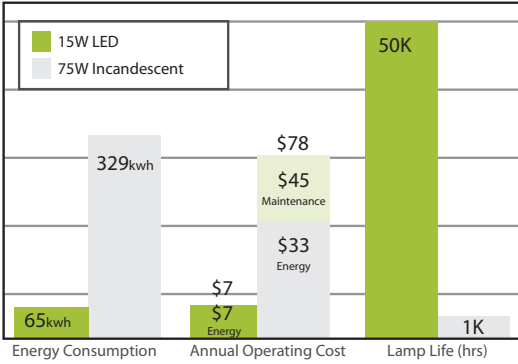


Energy Focus' products comply with the Buy America Act and are manufactured in the North American Free Trade Zone.

**SPECIFICATIONS**

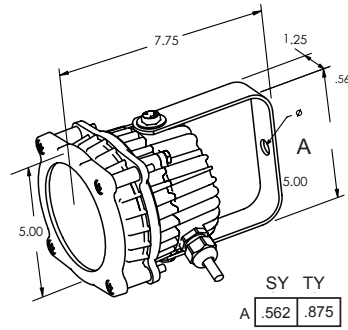
**COMPARISON**

Annual Hours = 4160hrs Energy Cost = 10c/kwh Cost to change lightbulb = \$5.00 each



**DESIGN**

Protected by Patent # USD0587833



**LED DockLight  
Compatible Arms**



- Strong, non-corrosive single strut steel arm with on/off switch and female receptacle
- Available in 24", 42" and 60" lengths
- 42" and 60" have an articulated arm
- Wear resistant 3 conductor AC cord fits directly into standard outlet

**LIGHT OUTPUT**

The powerful LED Docklight has been designed to deliver light all the way back into a 53' trailer!

|                                  | 10' | 20' | 30' | 40' | 45' | 48' | 53' |
|----------------------------------|-----|-----|-----|-----|-----|-----|-----|
| LED DockLight 12°<br>CBCP 18,734 | 187 | 47  | 21  | 12  | 9   | 8   | 7   |
| Quartz Halogen                   | 28  | 14  | 8   | 5   |     |     |     |
| Incandescent                     | 15  | 5   | 3   | 2   |     |     |     |

Beam Angle: FWHM (Full Width Half Max)  
Light Output in FC

**LED DockLight**

**Ordering Guide**

| Model | Color Temp        | Beam Spread                                                  | Size                       | Electrical Connection                                                                                                                                                                                                                                                                                                   | Mount/Finish                     |
|-------|-------------------|--------------------------------------------------------------|----------------------------|-------------------------------------------------------------------------------------------------------------------------------------------------------------------------------------------------------------------------------------------------------------------------------------------------------------------------|----------------------------------|
| LEDDL | 765 75 CRI, 6500K | NSP 12° Beam<br>NFL 32° Beam<br>SFL 12° Center/<br>32° Outer | 15 Small Fixture<br>15Watt | PNS 10' cord, std. male plug<br>(Nema 5-15) wet rated<br>PIS* 10' cord, hooded male plug<br>(IEC 60320-C14 plug) wet rated<br>SNS Switched 10' cord, std. male plug<br>(Nema 5-15) damp rated<br>SIA* Switched 16" cord, hooded male<br>plug (IEC 60320-C14)<br>damp rated<br>HWS 10' cord, hardwire leads<br>wet rated | SY Standard Arm Mount;<br>Yellow |

| Arm*: | Model | Type | Arm                                                                                         |
|-------|-------|------|---------------------------------------------------------------------------------------------|
|       | LEDDL | ARM  | 24 Arm length 24"<br>42 Arm length 42",<br>Articulated<br>60 Arm length 60",<br>Articulated |

\* Arm needs to be ordered with PIS or SIA electrical connection